



RAIDER Outboards

2023 Product Catalog



PURPOSE BUILT OUTBOARD MOTORS HARDENED FOR MILITARY APPLICATIONS



www.raideroutboards.com

Raider Outboards, Inc.

1885 Armstrong Drive
Titusville, Florida 32780

Telephone: 321.383.9585

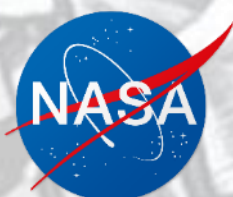
E-mail: sales@raideroutboards.com



RAIDER Outboards

Our Mission

Raider Outboards aims to offer the most dependable, high-end military grade engines and equipment together with expert hands-on instruction and technical assistance. While honoring those who protect, defend, and support our communities, our nation, and our partners across the world, we strive to be the industry leader in submersible outboard motors.

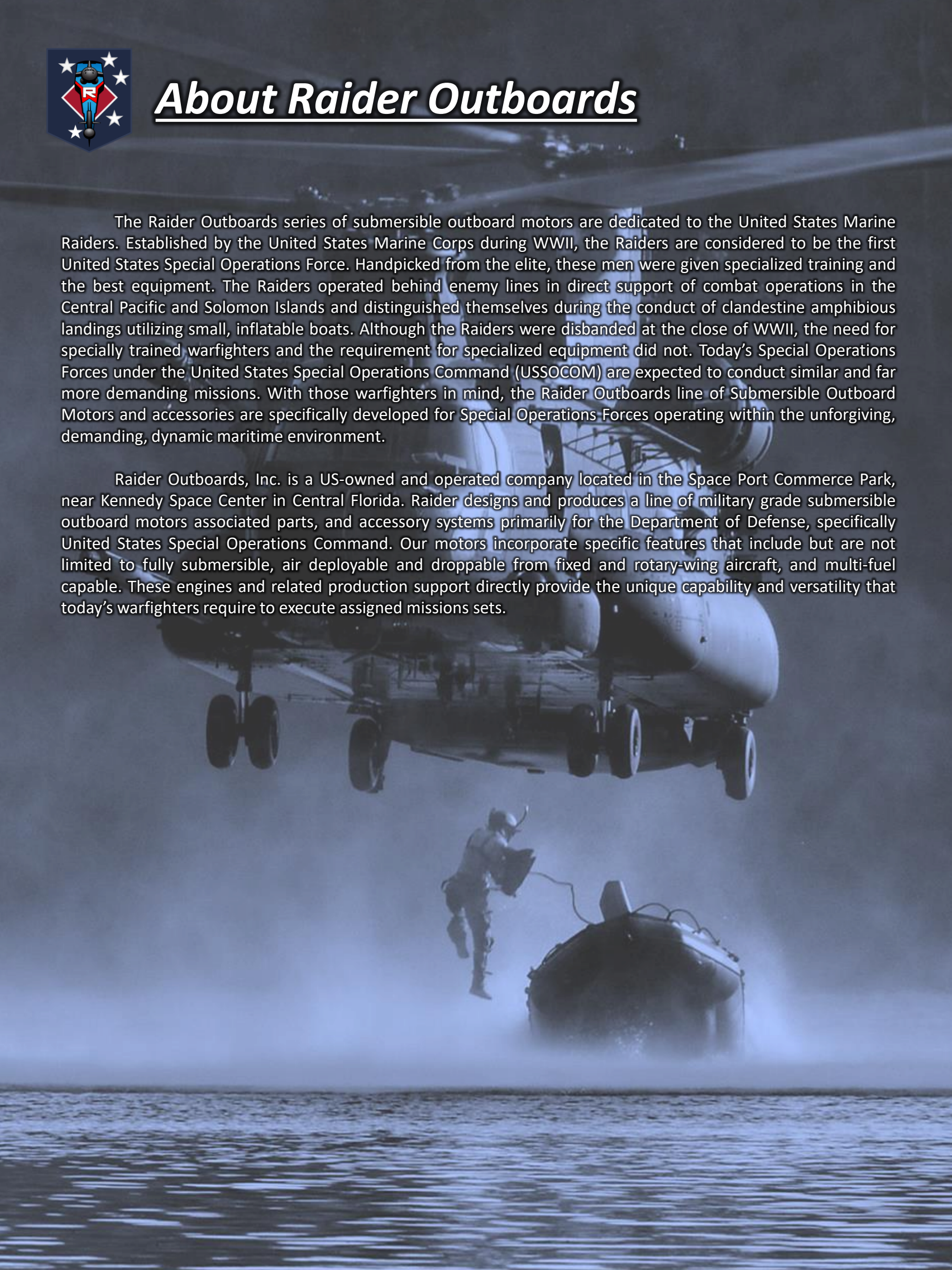




About Raider Outboards

The Raider Outboards series of submersible outboard motors are dedicated to the United States Marine Raiders. Established by the United States Marine Corps during WWII, the Raiders are considered to be the first United States Special Operations Force. Handpicked from the elite, these men were given specialized training and the best equipment. The Raiders operated behind enemy lines in direct support of combat operations in the Central Pacific and Solomon Islands and distinguished themselves during the conduct of clandestine amphibious landings utilizing small, inflatable boats. Although the Raiders were disbanded at the close of WWII, the need for specially trained warfighters and the requirement for specialized equipment did not. Today's Special Operations Forces under the United States Special Operations Command (USSOCOM) are expected to conduct similar and far more demanding missions. With those warfighters in mind, the Raider Outboards line of Submersible Outboard Motors and accessories are specifically developed for Special Operations Forces operating within the unforgiving, demanding, dynamic maritime environment.

Raider Outboards, Inc. is a US-owned and operated company located in the Space Port Commerce Park, near Kennedy Space Center in Central Florida. Raider designs and produces a line of military grade submersible outboard motors associated parts, and accessory systems primarily for the Department of Defense, specifically United States Special Operations Command. Our motors incorporate specific features that include but are not limited to fully submersible, air deployable and droppable from fixed and rotary-wing aircraft, and multi-fuel capable. These engines and related production support directly provide the unique capability and versatility that today's warfighters require to execute assigned missions sets.





Air Deployable

Raider's line of two stroke outboard motors are capable of being dropped from both fixed wing and rotary aircraft. Our motors are uniquely suited for air drops because each motor maybe rotated 90 degrees from operating position without leaking oil/fluids or degradation of operational capability for periods exceeding six months. Further, each motor maybe stowed within a drop package or while mounted to the boat. This capability allows for full spectrum compatibility across the Department of Defense and Government Agencies which employ air drop packages in the execution of assigned duties.





Submersible

Outboards equipped with our dewatering system upon recovery to the surface may be fully operational within 10 minutes. Easy instructions for dewatering are provided affixed to the cowling of every outboard motor. Most Operators, with practice and adherence to the provided instructions, restore the motor to operations within two (2) minutes of surfacing. Skilled operators are able to achieve lite off in as few as 30 seconds. The ability to submerge, without bagging, and quickly start is achieved by actuating a lever that opens valves in the cylinder head and fuel system that allows water to quickly be dispelled from the motor. Using the recoil starter, the Operator slowly pulls the motor over several times forcing water from the head by movement of the pistons while simultaneously using the fuel line primer bulb to expel bad fuel from the fuel system through the Dewatering Valve.





Electric Start

The electric starting function equipped on some motors incorporates a battery made fast under the shroud. This self contained starting system affords a unique capability over others competitors. Operators may now start the motor by simply pressing a push button on the front panel. This feature provides the capability to expeditiously start the motor in agitated seas states or situations such as surf passage where seconds count and positive control of the craft is a must. Additionally the starting systems provides a means to rapidly dewater the motor after a submersion period or unplanned emersion and with the aid of the battery lite-off may be achieved by most operators within two minutes.





RAIDER Brand 2-Stroke Motor Oil

Experience unmatched performance and extended engine life with Raider TC-W3. Our unique formula combines the trusted Lucas Synthetic Blend 2-Stroke marine oil with Ethanol Shield, resulting in a longer lasting TC-W3 oil that is designed to keep your engine running at its best. With Raider TC-W3, you can extend the life of your hoses and reduce fuel issues for up to a year. Choose Raider TC-W3 for maximum protection and reliability for your marine engine.

Benefits

- Stabilizes fuel up to 2 years
- Prevents engine repairs
- Prevents ethanol fuel issues
- Prevents water issues
- Conditions rubber and plastic hoses
- Vapor Corrosion Inhibitor
- Slows fuel aging
- No alcohol

Part No.

- R660417 1 gal TC-W3 2-Cycle Synthetic Marine Oil w/Ethanol Shield
- R660422 1 Drum (55Gal) TC-W3 2-Cycle Synthetic Marine Oil w/Ethanol Shield



LUCAS OIL



FUEL & OIL SOLUTIONS




R50-ES-001 Model M50



- ***50 Horsepower***
- ***178lbs***
- ***2-Stroke***
- ***Multi-Fuel***
- ***Submersible***
- ***Air Deployable***
- ***Electric Start***
- ***Pump Jet Capable***



	RAIDER R50-ES-001 (Model M50) NSN 2805-01-652-3076
Engine Type	<i>50 Horsepower/2-Stroke</i>
Primary Fuel	<i>Gasoline</i>
Weight	<i>178 lbs.</i>
Overall length	<i>45.1 Inches (1145mm)</i>
Overall width	<i>13 inches (330.2mm)</i>
Overall height	<i>55.6 Inches (1413mm)</i>
Transom length	<i>21.7 Inches (550mm)</i>
Starting System	<i>Electric or Pull Start</i>
Intake System	<i>NA Carbureted</i>
Exhaust System	<i>Through Hub</i>
Lubrication System	<i>TCW-3 50:1 Fuel Oil Mix</i>
Cooling System	<i>Raw Water</i>
Dewatering System	<i>Manual Valve Actuated</i>
Gearing	<i>12:23/1.92</i>
Gear Oil	<i>API GL5 SAE 80W-90</i>
Submergibility	<i>65 feet</i>
Air Drop	<i>Fixed Wing and Rotary Aircraft</i>
Multi-Fuel	<i>DFM/JP5/8/Kerosene</i>







R50-ES-002 Model 65HO

- ***65 Horsepower***
- ***178lbs***
- ***2-Stroke***
- ***Multi-Fuel***
- ***Submersible***
- ***Air Deployable***
- ***Electric Start***
- ***Pump Jet Capable***



 RAIDER Outboards	RAIDER R50-ES-002 (Model 65HO) NSN Pending	
Engine Type	<i>65 Horsepower/2-Stroke</i>	
Primary Fuel	<i>Gasoline</i>	
Weight	<i>178 lbs.</i>	
Overall length	<i>45.1 Inches (1145mm)</i>	
Overall width	<i>13 inches (330.2mm)</i>	
Overall height	<i>55.6 Inches (1413mm)</i>	
Transom length	<i>21.7 Inches (550mm)</i>	
Starting System	<i>Electric or Pull Start</i>	
Intake System	<i>NA Carbureted</i>	
Exhaust System	<i>Through Hub</i>	
Lubrication System	<i>TCW-3 50:1 Fuel Oil Mix</i>	
Cooling System	<i>Raw Water</i>	
Dewatering System	<i>Manual Valve Actuated</i>	
Gearing	<i>12:23/1.92</i>	
Gear Oil	<i>API GL5 SAE 80W-90</i>	
Submergibility	<i>65 feet</i>	
Air Drop	<i>Fixed Wing and Rotary Aircraft</i>	
Multi-Fuel	<i>DFM/JP5/8/Kerosene</i>	






R50-ES-003 Model M55

- *55 Horsepower*
- *165lbs*
- *2-Stroke*
- *Gasoline*
- *Submersible*
- *Air Deployable*
- *Pull Start*
- *Pump Jet Capable*



 RAIDER Outboards	RAIDER R50-ES-003 (Model M55) NSN 2805-01-697-7842
Engine Type	<i>55 Horsepower/2-Stroke</i>
Primary Fuel	<i>Gasoline</i>
Weight	<i>165 lbs.</i>
Overall length	<i>45.1 Inches (1145mm)</i>
Overall width	<i>13 inches (330.2mm)</i>
Overall height	<i>55.6 Inches (1413mm)</i>
Transom length	<i>21.7 Inches (550mm)</i>
Starting System	<i>Pull Start</i>
Intake System	<i>NA Carbureted</i>
Exhaust System	<i>Through Hub</i>
Lubrication System	<i>TCW-3 50:1 Fuel Oil Mix</i>
Cooling System	<i>Raw Water</i>
Dewatering System	<i>Manual Valve Actuated</i>
Gearing	<i>12:23/1.92</i>
Gear Oil	<i>API GL5 SAE 80W-90</i>
Submergibility	<i>65 feet</i>
Air Drop	<i>Fixed Wing and Rotary Aircraft</i>
Fuel	<i>Gasoline</i>






R40-ES-002 Model M40

- ***40 Horsepower***
- ***148lbs***
- ***2-Stroke***
- ***Multi-Fuel***
- ***Submersible***
- ***Air Deployable***
- ***Electric Start***
- ***Pump Jet Capable***



	RAIDER R40-ES-002 (Model M40) NSN 2805-01-652-3067
Engine Type	<i>40 Horsepower/2-Stroke</i>
Primary Fuel	<i>Gasoline</i>
Weight	<i>148 lbs.</i>
Overall length	<i>38.18 Inches (919mm)</i>
Overall width	<i>13 inches (330.2mm)</i>
Overall height	<i>49 Inches (1245mm)</i>
Transom length	<i>21.7 Inches (550mm)</i>
Starting System	<i>Electric or Pull Start</i>
Intake System	<i>NA Carbureted</i>
Exhaust System	<i>Through Hub</i>
Lubrication System	<i>TCW-3 50:1 Fuel Oil Mix</i>
Cooling System	<i>Raw Water</i>
Dewatering System	<i>Manual Valve Actuated</i>
Gearing	<i>13:25/1.85</i>
Gear Oil	<i>API GL5 SAE 80W-90</i>
Submergibility	<i>65 feet</i>
Air Drop	<i>Fixed Wing and Rotary Aircraft</i>
Fuel	<i>DFM/JP5/8/Kerosene</i>







R30-4S-001 Model SAR30C

- **30 Horsepower**
- **158lbs**
- **4-Stroke**
- **Gasoline**
- **Electric Start**
- **Pump Jet Capable**
- **12VDC Accessory Port**
- **Tow Bar Equipped**



 RAIDER Outboards	RAIDER R30-4S-001 (Model SAR30C) NSN Pending	
Engine Type	<i>30 Horsepower/4-Stroke EFI</i>	
Primary Fuel	<i>Gasoline</i>	
Weight	<i>158 lbs.</i>	
Overall length	<i>40.9 Inches (1038.9mm)</i>	
Overall width	<i>16.2 inches (411.5mm)</i>	
Overall height	<i>52.6 Inches (1336.4mm)</i>	
Transom length	<i>21.7 Inches (550mm)</i>	
Number of Cylinders	<i>3</i>	
W.O.T.	<i>5250-6250</i>	
Starting System	<i>Electric or Pull Start</i>	
Intake System	<i>Fuel Injection</i>	
Exhaust System	<i>Through Hub</i>	
Lubrication System	<i>10W-30/40 1.9 fl.oz.</i>	
Cooling System	<i>Raw Water</i>	
Ignition System	<i>Magneto C.D. Ignition</i>	
Gearing	<i>2.17/12:26</i>	
Gear Oil	<i>API GL5 SAE 80W-90</i>	
Jet Pump	<i>Available Upon Request</i>	

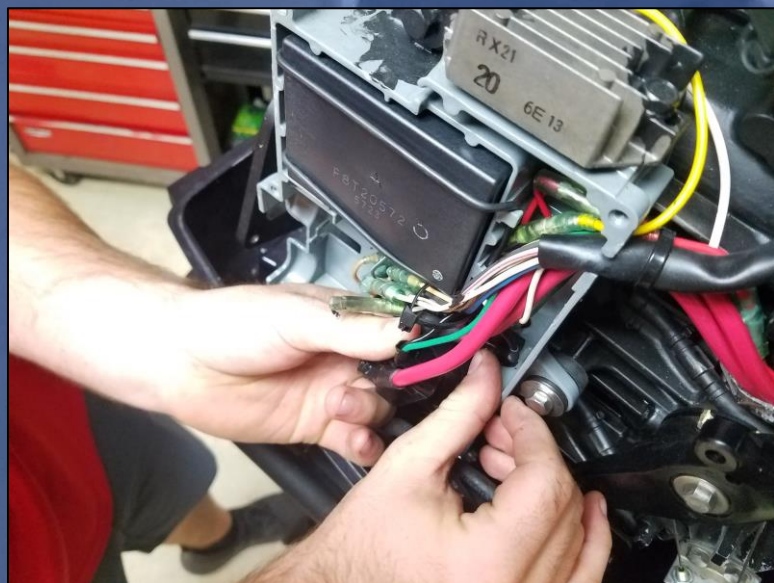




Motor Service Support

Our Service Support activities focus on site visits to provide direct technician support to your boat shops or dive lockers or depot level refurbishment of motors exposed to multiple submersions and austere operating conditions. These factory level maintenance actions improve operational reliability in the harshest operating conditions and extend the service life of each motor.

We provide detailed the inspection results and specify the items recommended for repair or replacement. Repair or replacement items include, but are not limited to propellers, knobs, handles, switches, cylinders, valves, bearings and gears, etc. To return the unit to a reliable, operational condition that meets OEM specifications.





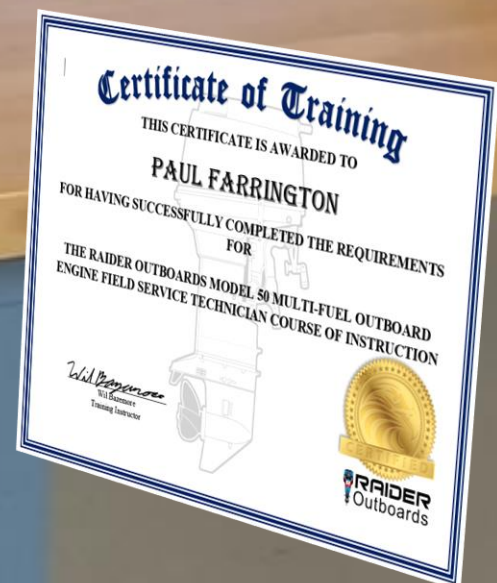
Technical Training Services

Our Training Programs focus on improving operator and maintenance personnel expertise in individual skill-sets, outboard engine operations, and maintenance. Our courses provide personnel with the necessary knowledge and skill sets to maintain and operate the Raider Outboard Motor, comprehensive in-depth training of the motor exterior and interior systems, general maintenance, pre and post operations maintenance checks, repair procedures, as well as, diagnosing and troubleshooting, to include logs and record keeping in support of required missions.



The Raider Outboard Motor Field Service Technician Course of Instruction

provides participants with the necessary skills and knowledge to successfully maintain, service, and operate the Raider Outboard Motor in today's highly demanding dynamic Maritime Environment. The course of instruction focuses Field Service requirements and also details the importance of preventative and periodic maintenance by utilizing both classroom instruction and practical exercises evaluating performance to ensure that each participant adequately displays knowledge of materials, methods, and the tools involved in field service, periodic maintenance, troubleshooting and the conduct of motor repairs. Practical's will also include Pre and Post Operations checks, operation on multi-fuels, full submersion – without bagging, dewatering, troubleshooting and field service maintenance actions.





Ready Service/Spare Parts KIT

The Ready Service/Spare Parts KIT for your Raider Outboard motor is crucial for ensuring mission readiness. Routine maintenance is essential to keep the motor running smoothly and prevent unexpected downtime during critical operations. However, unforeseen service actions can happen, and having spare parts readily available can mean the difference between completing the mission or not. The KIT includes all the necessary parts required to complete the yearly/100 hour prescribed routine maintenance actions, allowing users to perform the maintenance without having to wait for parts to arrive. This minimizes downtime and ensures that the motor is ready for operation when needed. The Ready Service/Spare Parts KIT provides peace of mind to users of Raider Outboards motors, knowing that they have the necessary tools to deal with any maintenance or service issues that may arise.

**R401800 Model 40 Ready Service/Spare
Parts KIT**

Part #	Description	Qty
R400116	Spark Plug	2
R400117	Thermostat	1
R400119	Thermostat Cap Gasket	1
R400319	Carburetor Gasket	1
R400421	Fuel Filter Assy	1
R400434	Gasket, Fuel Pump	1
R400435	Fuel Pump Assy	1
R400455	Model 40 Fuel Hose Replacement KIT	1
R400529	Carburetor Rebuild KIT	1
R400812	Fuse 20A	4
R400828	Strap/Battery Tray	1
R401104	Gasket 8.1-15-1 (10 Multiple)	10
R401113	Water Pump Impeller	1
R401133	Spring Pin 3-12 (10 Multiple)	2
R401142	Water Pump Repair KIT	1
R401202	Trim Tab	1
R401223-11	Propeller Assy (11")	1
R401224	Propeller Hardware KIT	1
R401229	* Split Pin 3-25 (10 Multiple)	10
R401303	Anode	1
R401313	Thrust Rod	1
R401314	Thrust Rod Spring	1
R401525	* Stop Switch Lanyard	1

**R502500 Model 50 Ready Service/Spare
Parts KIT**

Part #	Description	Qty
R500115	Thermostat	1
R500117	Thermostat Gasket	1
R500133	Anode (Power Head)	1
R500151	Spark Plug	3
R500527	Heavy Fuel Plate Gasket	1
R500540	Fuel Filter Assy.	1
R500543	Fuel Filter Element W/O-RING	2
R500595	Fuel Line Replacement Kit	1
R500711	Starter Rope	1
R501021	Fuse, 20 AMP	4
R501406	Gasket, Oil Fill/Drain	10
R501407	Anode (Trim Tab)	1
R501416	Water Pump, Impeller	2
R501439	Spring Pin	10
R501521-13	Propeller Assy (13) [Speed Prop]	1
R501527	Propeller Hardware Kit	1
R501527	Propeller, Split Pin	10
R501804	Anode (Stern Bracket)	1
R501815	Thrust Rod	1
R501816	Thrust Rod, Spring	1
R502226	Throttle Cables	2
R501033	*Stop Switch Lanyard ASSY	1
R508801	Model 50 Carburetor Repair Kit	1
R508802	Model 50 Water Pump Repair Kit	1
R508807	Cowling Strap Kit	1



Propellers

Raider Outboards provides customers with a choice of two propellers for each motor - a Speed (High Pitch) propeller and a Load (Low Pitch) propeller. The Load propeller is ideal for achieving excellent hole shot, acceleration, and pulling power at low speed, but it cannot achieve high top speeds. On the other hand, the Speed propeller is designed to offer the best top speed, but it may not perform well in terms of hole shot and low-speed performance. Choosing the right propeller pitch depends on the intended use of the boat since there is always a tradeoff between acceleration and top speed.



Raider OBM 30HP (SAR30C)

Part #	Diameter/Pitch	Type	Material
3R0B64518-1	9.7 X 9	Load	Aluminum
3R0B64523-1	9.9 X 11	Speed	Aluminum



Raider OBM 40HP (R40-ES-002)

Part #	Diameter/Pitch	Type	Material
R401223-9	11.6 X 9	Load	Aluminum
R401223-11	11.6 X 11	Speed	Aluminum



Raider OBM 50HP (R50-ES-001)

Part #	Diameter/Pitch	Type	Material
R501521-11	11.6 X 11	Load	Aluminum
R501521-13	12.5 X 13	Speed	Aluminum
R501521-13BP	12.5 X 13	Beaching	Aluminum



Raider OBM 65HP (R50-ES-002)

Part #	Diameter/Pitch	Type	Material
R501521-11	11.6 X 11	Load	Aluminum
R501521-13	12.5 X 13	Speed	Aluminum
R501521-13BP	12.5 X 13	Beaching	Aluminum



Raider OBM 55HP (R50-ES-003)

Part #	Diameter/Pitch	Type	Material
R501521-11	11.6 X 11	Load	Aluminum
R501521-13	12.5 X 13	Speed	Aluminum

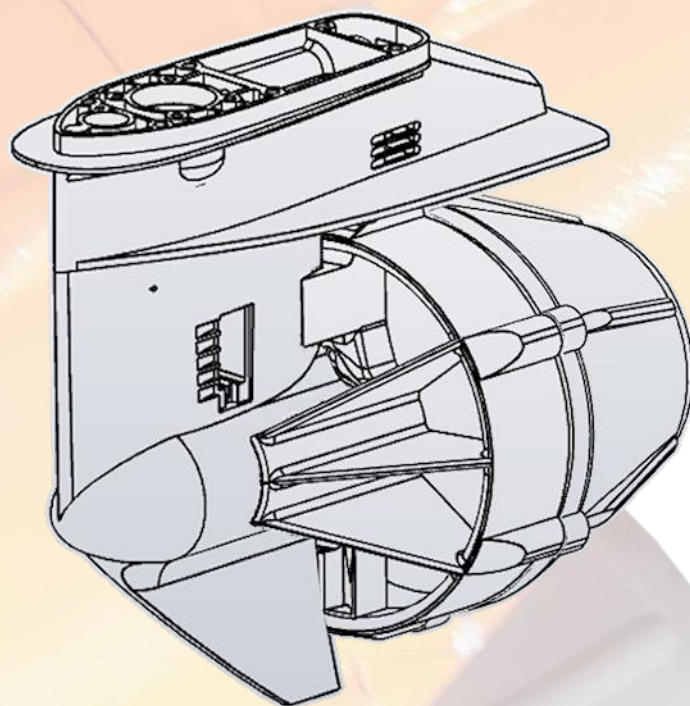


Bolt on Jet Pump

The Safety Jet, or impeller driven pump jet, is the ideal solution for operations in flood waters or surf passages, where the bottom contour can be unpredictable and traditional drive systems are often unable to operate after impact. With the Safety Jet, operators can work with confidence, knowing that they have a reliable and durable system that can withstand unexpected impacts. In addition, the Safety Jet significantly reduces the risk of inadvertent propeller strikes, making it a safer option for recovering personnel in the water.

Part No.

- Model 30 R304500
- Model 40 R404520
- Model 50 R504500





OBM Service Cart

Provides a mobile mounting platform for the Raider Outboard Motor for the purpose of storage, maintenance, or movement on the shop floor.

Features:

- Locking rear wheels, prevents movement during service actions.
- Beefy forward wheels for ease of movement across unimproved surfaces.
- Increased foot length for stability.
- Stows and locks into the Transportation Cage for over-the-road movement.
- Accommodates the Lower Unit Service Tool for repair actions.

Characteristics:

- Weight: 50lbs
- Height: 44"
- Width: 25"
- Length: 40"

Part No. R660605 (RSC-002)





Transportation Cage

Provides for safe secure storage of motor between operation cycles, layup or during transport over the road or by air.

Features.

- Securely locks the service cart during movement or storage.
- Removable storage container for tools or maintenance consumables.
- Stowable work table for maintenance actions.
- Secure mounting for spare propeller
- May be interconnected with existing Transportation Cage.

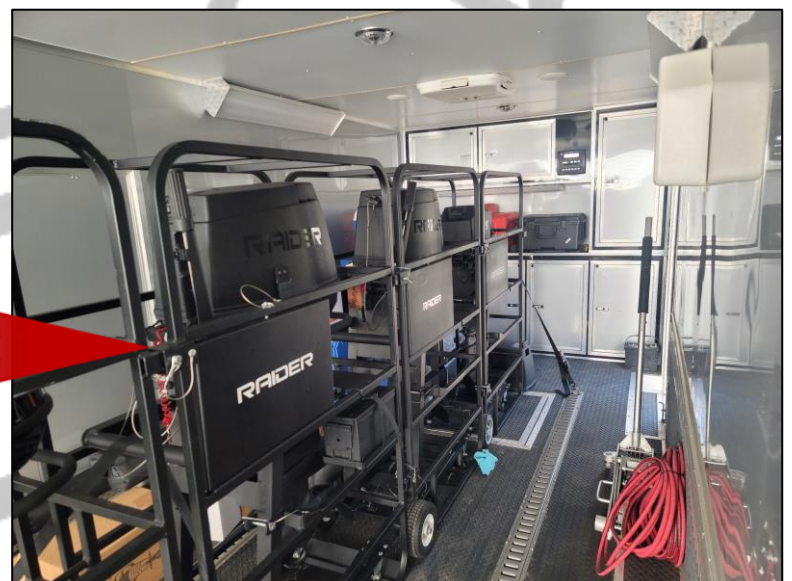
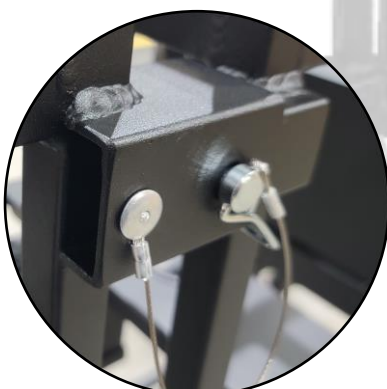
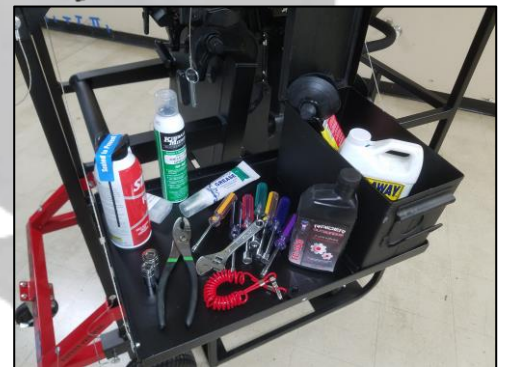
Characteristics:

- Weight: 50lbs
- Height: 44"
- Width: 25"
- Length: 40"

Characteristics

- Weight: 62lbs
- Height: 66"
- Width: 23"
- Length: 45"

Part No. R660610 (RTC-002)





Transportation System

This combines the Servicer Cart with the Transportation Cage under one part number for ease of ordering. These components together make the transportation system.

Features:

- Cart may be locked into place inside Transportation Cage.
- Safe and secure storage.
- Provides extra protection when conducting movement via land or MILAIR ensuring motor arrives in theater ready for immediate operations.

Characteristics

Weight: 112lbs

Height: 66"

Width: 23"

Length: 45"

Part No. R660615 (RTS-002)





EZ-GO Attachment

Transportation Cage Accessory that aids personnel by increasing positive control during movement of the Transportation System laden with an OBM.

Features:

- Installed by hand using attached quick release pins.
- Provides the maintainer ability to easily leverage and balance the Transportation System for shop movement or over the road staging.

Part No. R660620 (REZG-001)





Lower Unit Service Tool Attachment

The Lower Unit Service Tool provides a means to perform routine and unforeseen maintenance requirements to the Gear Case of a OBM.

Features:

- Securely retains a detached Gear Case to allow for the conduct of repairs or maintenance.
- Interfaces with the Raider Service Cart.
- Installs in seconds with an attached quick release pins.

Part No. R660625 (RLST-001)





Lifting Slings

Provides lifting capability with use of a hoist or floor crane.

Features:

- Lifting arms lock into place on Raider Grab Rail, securing the motor for safe lifting.
- Nylon webbing provides ample lifting capacity.

Part No.

- Model 40 R660630 (RLS-040)
- Model 50 R660635 (RLS-050)





Motor Cover

Made to withstand extreme environments from intense heat and humidity to brittle cold Transshield covers will protect your equipment in all conditions. Ideal for providing protection after motor submersion periods to ensure moisture is removed reducing corrosion.

Features:

- **WATERPROOF FABRICS** — Moisture will not penetrate the cover.
- **ANTI-CONDENSATING** — Moisture under the cover is pulled toward the outside of the cover via the capillary and moisture surface tension properties. Moisture is removed and relative humidity is reduced.
- **VAPOR CORROSION INHIBITOR (available)** — Reduces corrosion by as much as 95%. Effective on multiple metals. Majority of VCI is emitted inward toward the protected equipment. VCIs do not contain nitrites, nitrates, or hazardous materials.

Part No.

- **Model 40 R660645**
- **Model 50 R660650**





Transom Plates

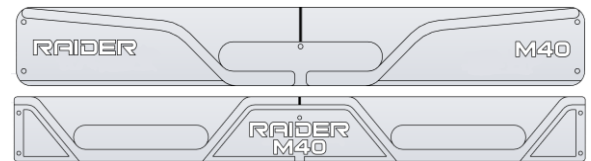
Our transom plates are all made of heavy-duty aluminum. Designed to absorb stress that it's exposed to and evenly distribute it throughout the transom, our transom plates provide reinforcement for the structural components of your transom.

Features:

- Provides a means for repetitive, expeditious, safe, and secure mounting of the motor to the transom.
- Provides a guide for the stern bracket that will automatically center the motor to the keel of the craft.

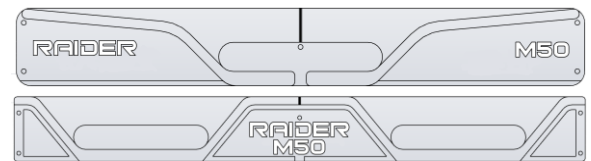
Model 40 Plates (R40-ES-002)

Part #	Type	Craft
R660830	Single Engine	Wing P4.7
R660820	Twin Engine	Wing P4.7



Model 50 Plates (R50-ES-001/002/003)

Part #	Type	Craft
R660810	Single Engine	Wing P4.7
R553101	Twin Engine	Wing P4.7





Twin Mount Adapter

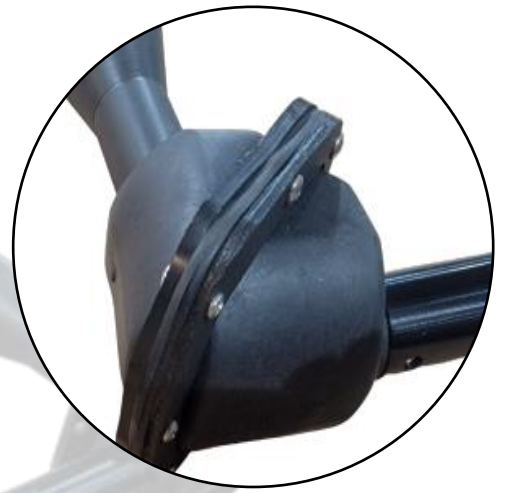
The Twin Mount Adapter enables effortless management of twin mounted Raider Outboard Motors. This accessory is compact, highly portable, and maneuverable, and can be installed even while underway, in low-light conditions, and in rough sea conditions. Unlike bulkier cable-driven systems, installation takes only a few seconds, enabling swift and seamless control for Operations.

Features:

- Compatible with the Raider Model 50 and 40 Outboard Motors.
- Self contained unit.
- Clamp on installation

Part No.

- R660710 Model 50 Twin Mount Adapter
- R660720 Model 40 Twin Mount Adapter





Emergency Field KIT

The EFK is an essential addition to your on-board equipment, providing all the tools and spare parts you need for troubleshooting and emergency repairs. The compact, waterproof case contains spark plugs, deep sockets, a six-way screwdriver, a crescent wrench, pliers, and more. The kit also includes marine grease and a starter cord, ensuring that you're ready for any situation. And while the EFK is comprehensive, it's important to note that additional items may be required based on organizational Standard Operating Procedures (SOP). With the Raider Outboard Motor and EFK, you can have peace of mind on the water.

Emergency Field KIT R660200		
Part #	Description	Qty
R660201	Sparkplugs	2
R660202	M10 Deep Socket 3/8 Dr	1
R660203	M16 Deep Socket 3/8 Dr	1
R660204	M13 Deep Socket 3/8 Dr Modified	1
R660205	6 Way Screwdriver	1
R660206	Crescent Wrench	1
R660207	Pliers	1
R660208	3/8 Hex Drill Socket	1
R660209	3/8 Ratchet	1
R660210	Pelican Case 1150	1
R660211	#5.5 Starter Cord (7ft)	1
R660212	2 Oz Marine Grease	1





Maintenance Tool KIT

The Raider Maintenance Tool Kit contains both essential and specialized tools necessary to conduct field service maintenance, routine upkeep, and unforeseen repairs on the Raider Outboard Motor. This Kit is specifically designed for situations where the motor is operated in remote or challenging locations. All tools are securely stored and transported in a durable Pelican case known for its ability to safeguard contents in harsh environments, making this Kit a perfect solution for deployment purposes.



Maintenance Tool KIT R660100

Part #	Description	Qty
R660101	19mm Deep Socket	1
R660102	8mm Wrench	1
R660103	13mm Wrench	1
R660104	1/4" T-Handle	1
R660105	3/32" T-Handle	1
R660106	17mm Wrench	1
R660107	3/8dr Square Drive Adaptor	1
R660108	3/8dr 15/16" Shallow Socket	1
R660109	1/2dr 27mm Shallow Socket	1
R660110	1/4dr 4" Ext	1
R660111	3/8dr 21mm Shallow Socket	1
R660113	1/4dr 13mm Shallow Socket	1
R660114	1/4dr 10mm Shallow Socket	1
R660115	3/8dr 5/8" Spark Plug Socket	1
R660116	3/8dr 8mm Shallow Socket	1
R660117	3/8dr 10mm Shallow Socket	1
R660118	3/8dr 13mm Shallow Socket	1
R660119	3/8dr 13mm Deep Socket	1
R660120	3/8dr 22mm Shallow Socket	1
R660121	3/8dr 3" Ball Ext	1
R660122	18" Striking Pry Bar	1
R660123	Seal Puller	1
R660124	3/8dr Extra Long Breaker Bar	1
R660125	8 Pc Roll Pin Punch Set	1
R660126	14mm Wrench	1
R660127	8" Long Needle Nose Pliers	1
R660128	10" Knipex Cutters	1
R660129	1/4dr Ratchet	1
R660130	3/8dr Ratchet	1
R660131	8-3/4" Ratchet Mag Std Red Sd	1
R660132	7" Striper Crimper Cutter Sm Ga	1
R660133	Deadblow 32oz Hammer	1
R660135	Fuel Hose Clamp Crimping Pliers	1
R660136	10mm Wrench	1
R660137	3/4-7/8" Slim Wrench	1
R660138	3/8dr 1-1/2" Ball Ext	1
R660139	2mm T-Handle	1
R660140	9/32" Midget Wrench	1
R660141	9/16" Wrench	1
R660142	1/8" T-Handle	1
R660143	5/32" T-Handle	1
R660144	9/32" Short Combo Wrench	1
R660145	3/16" T-Handle	1
R660147	Compression Gauge Kit	1
R660148	Multi-Meter	1
R660149	Gear Lube Pump	1
R660150	Universal Motor Flusher	1
R660152	Flywheel Puller	1
R660154	Flywheel Holder	1
R660156	Spark Plug Gapper	1
R660157	Raider 13mm Modified Socket	1
R660158	Ball Peen Hammer	1
R660159	12" Adjustable Wrench	1
R660160	Pelican Case	1
R660161	Foam Insert Tray Qty 3	1
R660162	Large Marine Plug Screwdriver (Green)	1
R660163	Pressure Tester	1
R660164	Vacuum Tester	1
R660165	Spark Checker	1
R660166	8mm Gear Lube Adapter	1
R660167	Long Nose Slip Joint Pliers	1
R660168	Spring Pin Removal Tool	1
R660169	Spring Pin Installer Tool	1

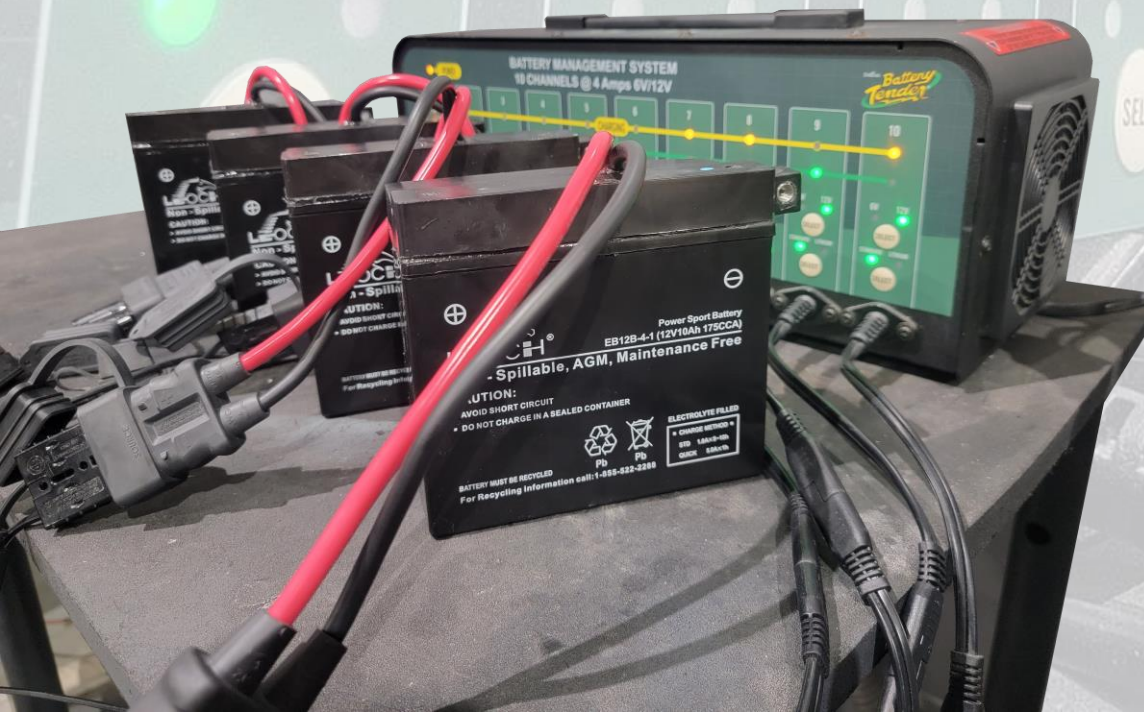


Battery Tenders

Raider Outboards' battery chargers - the ultimate solution to maintain the optimal charge of your Outboard Motor Start Batteries. Our battery chargers come in three different options: a single bank charger, a four bank charger, and a ten bank charger. These devices use microprocessor-controlled charging systems that constantly monitor the battery's voltage and adjust the charge rate accordingly, ensuring that your batteries are always ready to use when you need them. Our battery chargers are designed to offer short-circuit protection and reverse polarity protection, giving you peace of mind when using them. Choose Raider Outboards' battery chargers to extend the life of your batteries and keep them in top condition.

Part No.

- R660518 Single Bank Tender
- R660503 Four Bank Tender
- R660542 Ten Bank Tender
- R660501 Start Battery Tender Adapter Cable





Thank You!

As the President of Raider Outboards to express my deep gratitude and admiration for your service and sacrifice in protecting our country's freedom. As a company that manufactures military-grade outboard motors for the Department of Defense, government agencies, and partner nations, we are honored to provide you with equipment that can support your missions.

At Raider Outboards, we understand that your missions require the very best equipment, and we take great care in designing and manufacturing our products to meet your needs. Our outboard motors are built with the highest quality materials and undergo rigorous testing to ensure their durability and reliability in extreme conditions. We know that you depend on our products to accomplish your mission and come home safely to your loved ones.

It is a great privilege to provide you with the tools you need to protect our country and defend freedom. We are committed to continuing to improve our products and support your missions. We understand that every mission is critical and that our products play a crucial role in helping you accomplish them.

Once again, on behalf of the entire Raider Outboards team, I want to express our sincere appreciation for your service and sacrifice. We are proud to support you, and we wish you all the best as you continue to serve our great country.



Sincerely,

George Woodruff

President, Raider Outboards



RAIDER Outboards

*Reliability and performance in the most
demanding conditions*

